

产品规格承认书
SPECIFICATION

文件编号 File No.: UME-EG-SP23021701/A1

| | | | |
|----------------|--------------------------------|-----------------|-----|
| 客户 Customer | AKON | 核准 Approval | ZL |
| 品名 Product | 开关电源 Switching power supply | 品管确认 QC | LTF |
| 型号 Model | AD-AKB050P200 | 审核 Check | ZL |
| 日期 Date | 2023-02-17 | 拟制 Execution | BMD |

| 客户承认意见 Confirmation by Customer | 客户签署 Stamp & Signature |
|---|---------------------------|
| <input type="checkbox"/> 合格 Accept | |
| <input type="checkbox"/> 不合格 Reject | |
| <input type="checkbox"/> 条件合格 Conditional Acceptance | |
| | |

确认签署后，请回传一份。有任何问题，请尽快告知我们。

Please return one copy to us with your signature and feel free to contact us for any questions.

厦门友盟电子有限公司

XIAMEN UME ELECTRONICS CO., LTD.

电话 Tel:0592-2611448

地址：厦门市翔安区莲亭路火炬八方工业园10号楼882-7号8楼

Add: 8th Floor, No. 882-7, Lianting Road, Xiamen Torch Hi-Tech Zone (Xiangan) Industrial Zone

| | | | | | |
|--|-------------|-------------|---------------|------------------|----------------------|
| 产品规格承认书 SPECIFICATION | | | | 文件编号 File No. | UME-EG-SP23021701/A1 |
| 品名 Product | 开关电源 SPS | 型号 Model | AD-AKB050P200 | 日期 Date | 2023-02-17 |

目录 INDEX

| | | |
|----|---|-------|
| 1 | 变更履历 Revision History..... | 1-3 |
| 2 | 概述 Summary | 2-4 |
| 3 | 技术要求 Technical requirements..... | 3-4 |
| | 3.1 安全标准和认证证书 Safety Standards and Certificate number | 3-4 |
| | 3.2 Input | 3-4 |
| | 3.3 Output..... | 3-4 |
| | 3.4 可靠性及质量控制 Reliability and Quality Control..... | 3-5 |
| | 3.5 测试线路图 Test Circuit..... | 3-9 |
| 4 | 线路图 Schematic Diagram | 4-9 |
| 5 | 电路板图 P.C.B..... | 5-10 |
| 6 | Cord (单位 unit: mm 颜色 color: BK) | 6-11 |
| 7 | 外观示意图 Mechanical Drawing (单位 unit: mm 颜色 color: BK) | 7-12 |
| 8 | 铭板标识 Label..... | 8-13 |
| 9 | 包装方式 Packaging | 9-13 |
| 10 | BOM list..... | 10-14 |

*** The products limited warranty period is 18 months.
(From date code of product.)**

*** The products meet RoHS requirements.**

| | | | | | |
|-----------------|----|-----------|----|---------------|-----|
| 批准 Approval: | ZL | 审核 Check: | ZL | 制表 Execution: | BMD |
|-----------------|----|-----------|----|---------------|-----|

| | | | | | |
|--|-------------|-------------|---------------|------------------|----------------------|
| 产品规格承认书 SPECIFICATION | | | | 文件编号 File No. | UME-EG-SP23021701/A1 |
| 品名 Product | 开关电源 SPS | 型号 Model | AD-AKB050P200 | 日期 Date | 2023-02-17 |

1 变更履历 Revision History

| 版本 REV | 变更日期 Date | 变更内容 Content of Change | 制表 Execution | 审核 Check | 批准 Approval |
|-----------|--------------|---------------------------|-----------------|-------------|----------------|
| V1.0 | 2023-02-17 | 1.First Issue | <i>BMD</i> | <i>ZL</i> | <i>ZL</i> |
| | | | | | |
| | | | | | |
| | | | | | |
| | | | | | |
| | | | | | |
| | | | | | |
| | | | | | |
| | | | | | |
| | | | | | |
| | | | | | |
| | | | | | |
| | | | | | |
| | | | | | |
| | | | | | |
| | | | | | |
| | | | | | |
| | | | | | |
| | | | | | |
| | | | | | |
| | | | | | |
| | | | | | |

| | | | | | |
|-----------------|-----------|-----------|-----------|---------------|------------|
| 批准 Approval: | <i>ZL</i> | 审核 Check: | <i>ZL</i> | 制表 Execution: | <i>BMD</i> |
|-----------------|-----------|-----------|-----------|---------------|------------|

| | | | | | |
|--|-------------|-------------|---------------|------------------|----------------------|
| 产品规格承认书 SPECIFICATION | | | | 文件编号 File No. | UME-EG-SP23021701/A1 |
| 品名 Product | 开关电源 SPS | 型号 Model | AD-AKB050P200 | 日期 Date | 2023-02-17 |

2 概述 Summary

2.1 本文件包含一般的客户要求及电气、机构和安全性能等方面的描述。

This document contains general customer requirements and those of specific electrical, mechanical and safety for this product.

3 技术要求 Technical requirements

3.1 安全标准和认证证书 Safety Standards and Certificate number

Japan: 电气用品安全法别表第八【JET6108-61010-1011】

3.2 Input

| | |
|----------------------------|--|
| Rated Input Voltage | 100-240Vac |
| Operating Range | 90-264Vac |
| Rated Input Frequency | 50/60Hz |
| Rated Input Current | 0.3A |
| Input Power (No Load) | 0.1W Max |
| Primary Current Protection | Over current protection: Electric current fuse |

3.3 Output

| | | |
|-------------------------|--|-------------|
| Rated Dc Output Voltage | 5.5V Max | No Load |
| | 5.0V ± 5% | Load 2000mA |
| Over Current Protection | 2.6A Max @ Vin=100Vac/240Vac | |
| Line Regulation | The line regulation is less than ±1% while measuring at rated load and ±5% of input voltage changing | |
| Ripple | ≅ 200mVp-p | |
| Switching Efficiency | 78.7% minimum @ input 115AC/230VAC to meet DOE6 | |
| DC Plug | Φ 1.7*4.0*9.5mm | |
| DC Cord | 22AWG 2464 L = 1500mm, black Lead-free soldering | |

| | | | | | |
|-----------------|----|-----------|----|---------------|-----|
| 批准 Approval: | ZL | 审核 Check: | ZL | 制表 Execution: | BMD |
|-----------------|----|-----------|----|---------------|-----|

| | | | | | |
|--|-------------|-------------|---------------|------------------|----------------------|
| 产品规格承认书 SPECIFICATION | | | | 文件编号 File No. | UME-EG-SP23021701/A1 |
| 品名 Product | 开关电源 SPS | 型号 Model | AD-AKB050P200 | 日期 Date | 2023-02-17 |

3.4 可靠性及质量控制 Reliability and Quality Control

【Electrical Test Items】

| Item | Conditions | Criteria |
|------|---|---|
| 1 | Leakage Current Measure the leakage current between Primary and Secondary when adding rated input. AC input = Rating voltage (100/240V) | Less than 250 μ A |
| 2 | ESD Test 1. Test is conducted at room temperature/humidity.(25°C, RH 50-60%) 2. Test set is 150pF/150 Ω . 3. (1) \pm 4KV: Contact discharge test. +phase: 3times, -phase: 3times, total: 6times. (2) \pm 8KV: Air discharge test. +phase: 3times, -phase: 3times, total: 6times. (Note) After each ESD test, it should be discharged. | No malfunction (must be in spec after test). |
| | 1. Test is conducted at room temperature/humidity.(25°C, RH 50-60%) 2. Test set is 150pF/150 Ω . 3. (1) \pm 6KV: Contact discharge test. + phase: 3times, -phase: 3times total: 6times. (2) \pm 10KV: Air discharge test. + phase: 3times, -phase: 3times, total: 6times. (Note) After each ESD test, it should be discharged. | No destruction |
| | ESD Test (Ability test) 1. Test is conducted at room temperature/humidity.(25°C, RH 50-60%) 2. Test condition: 150pF/150 Ω . 3. Contact discharge / Air discharge 4. Load: 1) no load 2) rated load 5. Impressing 10 times continuously to plus and minus each. 6. Discharging once after impressing 10 times (To confirm the capacity of unit up to the unit destroyed) | It confirms at which voltage value the adapter breaks.(Note: Not part of qualification) |
| 3 | Hi-POT test Condition=AC3000V, 1min. Test place=Between AC blade and DC plug Sensitivity current=10mA | No malfunction. (damage, arc, breakdown etc) |
| 4 | Insulation resistance DC500V, 1min. Between AC blade and DC plug | More than 100M Ω |
| 5 | Temperature Rise Test 1. Apply rating input voltage(100/240V), 2. Load: Charge actual Cellular phone 3. Measure the surface temperature of the adaptor 4. T ambient = The room temperature 5. Condition: Until it carries out temperature saturation (the definition of temperature than 1°C in 1 hour). | Housing surface Temperature rise is less than 45K. |

| | | | | | |
|-----------------|----|-----------|----|---------------|-----|
| 批准 Approval: | ZL | 审核 Check: | ZL | 制表 Execution: | BMD |
|-----------------|----|-----------|----|---------------|-----|

| | | | | | |
|--|-------------|-------------|---------------|------------------|----------------------|
| 产品规格承认书 SPECIFICATION | | | | 文件编号 File No. | UME-EG-SP23021701/A1 |
| 品名 Product | 开关电源 SPS | 型号 Model | AD-AKB050P200 | 日期 Date | 2023-02-17 |

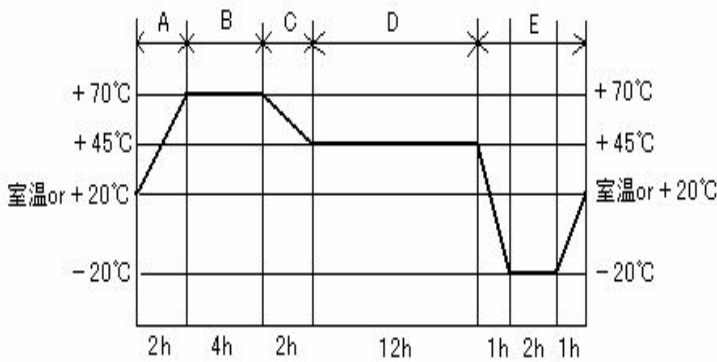
| | | | |
|---|---------------------------|--|---|
| | | 1. Apply rating input voltage(100/240V), 2.No Load 3.Measure the surface temperature of the adaptor | Housing surface Temperature rise is less than 15K. |
| 6 | Input over / under | Apply voltage=(rating input voltage)x(1±30%) Impressed time : 24h | No destruction |
| 7 | EMI/Conducted Emission | Telephone stand by mode with rapid-charge condition | Conform to: FCC 47CFR Part 15 Class B (for US) J55032(For Japan) |
| 8 | Surge | IEC61000-4-5 1.2×50µs 1.0KV Positive and negative all three times, Current limiting impedance 100 Ω, Time interval 30 seconds min. | No destruction. |

【Environmental Test Items】

| Item | | Conditions | Criteria |
|------|------------------------------|--|---|
| 1 | Temperature range | Electrical performance guarantees temperature range: 0°C to 40°C Electrical performance not guarantees working temperature range: -20°C to 50°C Storage temperature range: -30°C to 80°C | No abnormal appearance, mechanic performance or electric performance |
| 2 | High Temperature Leave | 1. Temperature 80°C for 96 hours. 2. After that test, test set is left in normal temperature, humidity condition for more than 1hour, then evaluate. | No abnormal appearance, mechanic performance or electric performance |
| 3 | Low Temperature Leave | 1. Temperature -30°C for 96 hours. 2. After that test, test set is left in normal temperature, humidity condition more than 1(hour), then evaluate. | |
| 4 | High Temperature Humidity | 1. Temperature 50°C, air moisture 90-95% RH for 96 hours. 2. After that test, test set is left in normal temperature, humidity condition more than 30min, then evaluate. | |
| 5 | Temperature Humidity test | 1. Temperature 40°C, air moisture 90-95% RH for 96 hours. 2. After that test, test set is left in normal temperature, humidity condition more than 30min, then evaluate. | |
| 6 | Heat Shock Test | 1. Condition: -30°C/ 1 hour to +80°C/ 1 hour, 60 cycles 2. After that test, test set is left in normal temperature, humidity condition more than 1 hour, then evaluate. | |

| | | | | | |
|-----------------|----|-----------|----|---------------|-----|
| 批准 Approval: | ZL | 审核 Check: | ZL | 制表 Execution: | BMD |
|-----------------|----|-----------|----|---------------|-----|

| | | | | | |
|--|-------------|-------------|---------------|------------------|----------------------|
| 产品规格承认书 SPECIFICATION | | | | 文件编号 File No. | UME-EG-SP23021701/A1 |
| 品名 Product | 开关电源 SPS | 型号 Model | AD-AKB050P200 | 日期 Date | 2023-02-17 |

| | | | |
|---|-----------------------------|---|----------------|
| 7 | Heat/humidity Cycle Test | <p>A, C, D : RH=90 ± 10% B : RH= 90 ± 5% E : No limit After 5cycles, put EUT at room temperature/humidity condition</p>  <p>The graph shows a temperature cycle with five stages: A (2h ramp up to +70°C), B (4h dwell at +70°C), C (2h ramp down to +45°C), D (12h dwell at +45°C), and E (1h ramp down to -20°C, 2h dwell at -20°C, 1h ramp up to room temperature). Humidity is 90% ± 10% for A, C, and D; 90% ± 5% for B; and no limit for E.</p> | |
| 8 | Humidity | Operation is 10~85%. Storages is 5~95% | Non-condensing |

【Mechanical Test Items】

| Item | Item | Conditions | Criteria |
|------|--|--|---|
| 1 | Drop Test | Height of drop: 1m, 1times/each surface (total 6 times), Floor: Hardwood. | No parts remove, no abnormal mechanic performance, (outside scratches are acceptable) |
| 2 | Package Drop Test | 1. Packaged condition. 2. Drop test points (1) 1 corner (2) 2 edges (3) 4 surfaces, Total: 7times drop test. 3. Height of drop:50cm. Bottom surface drop test only apply 65cm. | |
| 3 | Unit Vibration Test | 1. Vibration condition:33.3Hz/min. 20.6m/s ² 2. (1)Top/Bottom direction:4-hours (2)Right/Left direction:2-hours (3) Front/Back direction:2-hours | |
| 4 | Package Vibration | 1.Vibration condition: 5-55-5Hz/2min. (1)Top/Bottom direction : 12.5(m/S ²)30(min) (2) Right/left direction : 7.5(m/S ²)15(min)*2 | |
| 5 | AC Plug in/out Test (AC Blade part) | 1. AC Plug in/out test more than 5000times 2.10(times/min). 1 time is in/out action. | |
| 6 | Exfoliate with cellophane tape and examine it | Use Nichiban 18mm or 24mm width | A character do not disappear. |
| 7 | The reliability to face each other to come off | ① -40℃ ② 80℃ ③ 50℃ 90% Each 96 hours ④ ③ After, it is a thermal shock examination | Don't take the label off the main body |

| | | | | | |
|-----------------|----|-----------|----|---------------|-----|
| 批准 Approval: | ZL | 审核 Check: | ZL | 制表 Execution: | BMD |
|-----------------|----|-----------|----|---------------|-----|

| | | | | | |
|--|-------------|-------------|---------------|------------------|----------------------|
| 产品规格承认书 SPECIFICATION | | | | 文件编号 File No. | UME-EG-SP23021701/A1 |
| 品名 Product | 开关电源 SPS | 型号 Model | AD-AKB050P200 | 日期 Date | 2023-02-17 |

| | | | |
|---|--------------------|---|---|
| | the label | of 96 cycles | |
| 8 | No tally part step | Difference of the pitch by height differences of the tally part between casts | less than 0.25mm after an environmental examination |

【DC cord Test Items】

| Item | Conditions | Criteria |
|------|---|---|
| 1 | DC Cord strength (adaptor side / plug side) 1. Test part: Between adaptor and DC cord 2. Pull a cord with 49N(5Kgf) force 3. Time: 1min. | No abnormality such as wire cut, bushing come off |
| 2 | DC Cord Bending Test (adaptor side / plug side) Weight = 4.9N(500g) Angle = +/-90° Cycles in every minute = 40times/min. Test cycles = 1000times Note: contrarotate 90°, and then rotate it clockwise with 180° (+90° ~ -90°), and at last return to origin. (1 Cycle : 0° ⇒ -90° ⇒ 0° ⇒ +90° ⇒ 0°) | Operate properly. |

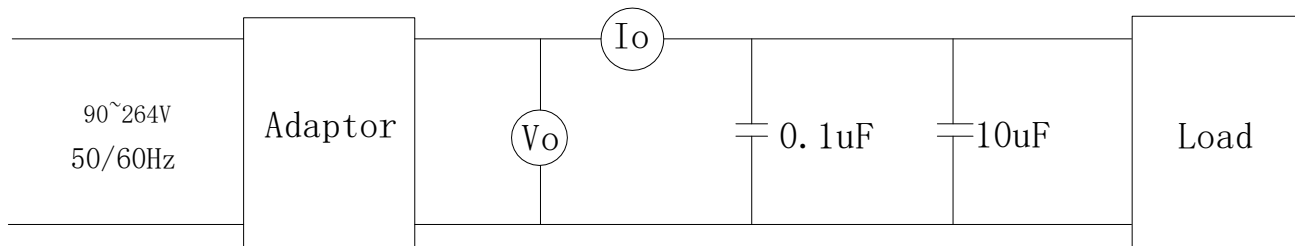
【Safety Test Items】

| | | | |
|---|--------------------|--|---|
| 1 | MTBF | Make a measurement condition, a calculation standard clear | More than 50,000 hours |
| 2 | Part materials | It is maintenance or the incombustibility of contact / part materials approaching it in an outer fence, the charge department of the electric part | same as UL94V-0; more than it |
| 3 | print board | Incombustibility | same as UL94V-0; more than it |
| 4 | No tally part step | Difference of the pitch by height differences of the tally part between casts | less than 0.25mm after an environmental examination |

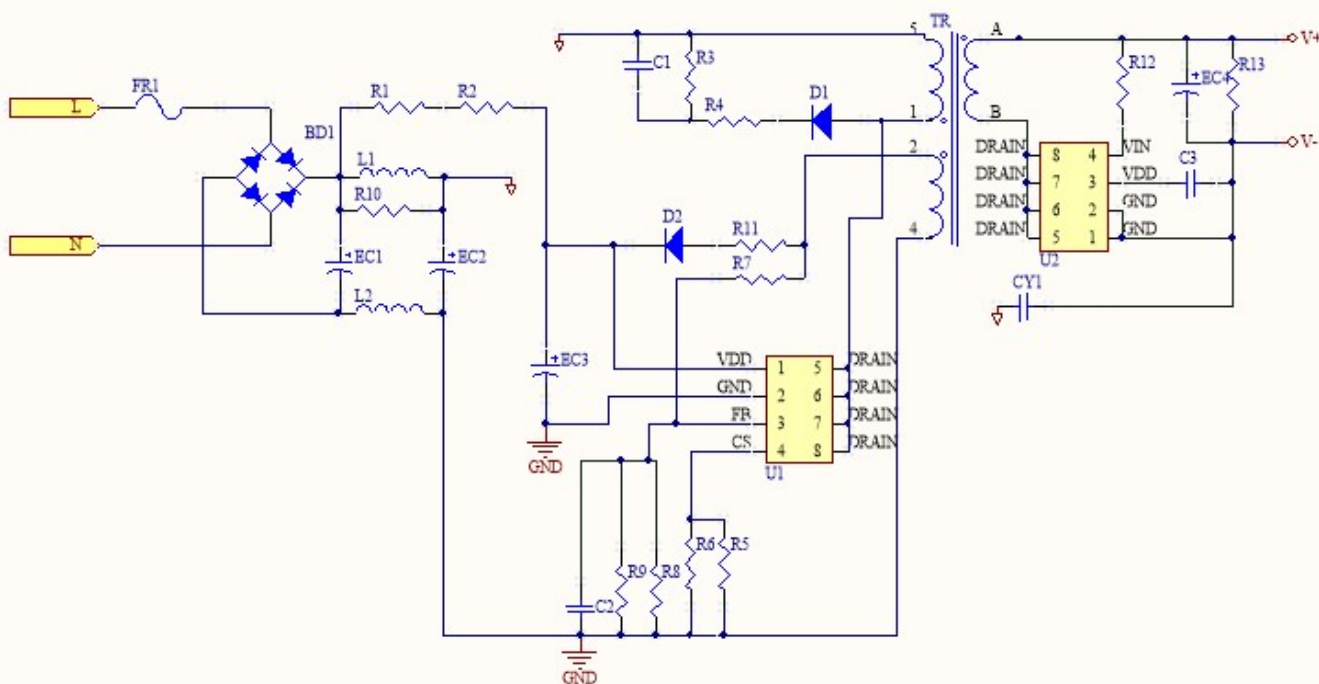
| | | | | | |
|-----------------|----|-----------|----|---------------|-----|
| 批准 Approval: | ZL | 审核 Check: | ZL | 制表 Execution: | BMD |
|-----------------|----|-----------|----|---------------|-----|

| | | | | | |
|--|-------------|-------------|---------------|------------------|----------------------|
| 产品规格承认书 SPECIFICATION | | | | 文件编号 File No. | UME-EG-SP23021701/A1 |
| 品名 Product | 开关电源 SPS | 型号 Model | AD-AKB050P200 | 日期 Date | 2023-02-17 |

3.5 测试线路图 Test Circuit



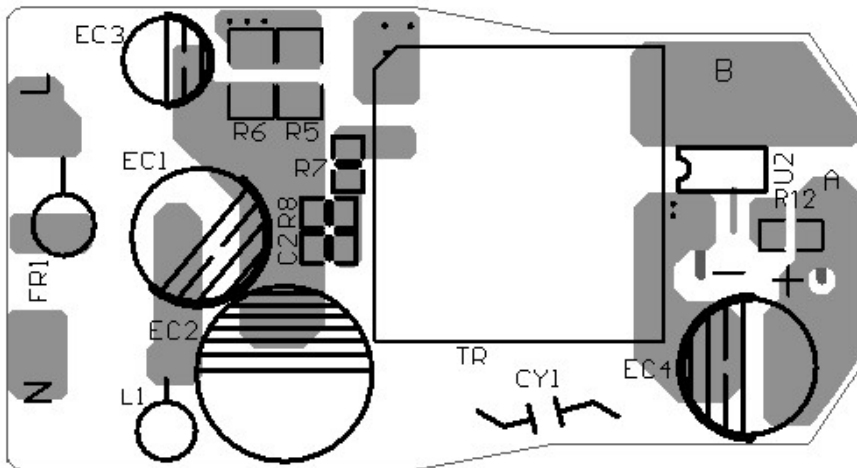
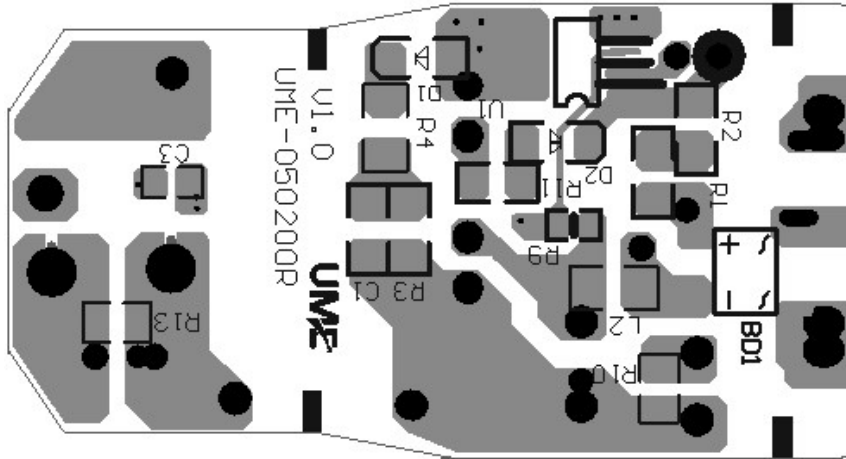
4 线路图 Schematic Diagram



| | | | | | |
|-----------------|----|-----------|----|---------------|-----|
| 批准 Approval: | ZL | 审核 Check: | ZL | 制表 Execution: | BMD |
|-----------------|----|-----------|----|---------------|-----|

| | | | | | |
|--|-------------|-------------|---------------|------------------|----------------------|
| 产品规格承认书 SPECIFICATION | | | | 文件编号 File No. | UME-EG-SP23021701/A1 |
| 品名 Product | 开关电源 SPS | 型号 Model | AD-AKB050P200 | 日期 Date | 2023-02-17 |

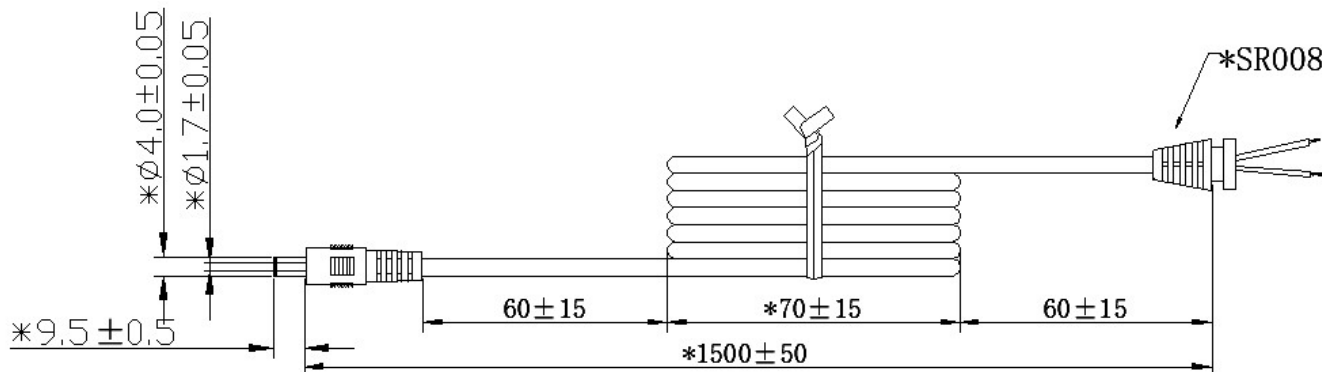
5 电路板图 P.C.B



| | | | | | |
|-----------------|----|-----------|----|---------------|-----|
| 批准 Approval: | ZL | 审核 Check: | ZL | 制表 Execution: | BMD |
|-----------------|----|-----------|----|---------------|-----|

| | | | | | |
|--|-------------|-------------|---------------|------------------|----------------------|
| 产品规格承认书 SPECIFICATION | | | | 文件编号 File No. | UME-EG-SP23021701/A1 |
| 品名 Product | 开关电源 SPS | 型号 Model | AD-AKB050P200 | 日期 Date | 2023-02-17 |

6 Cord (单位 unit: mm 颜色 color: BK)



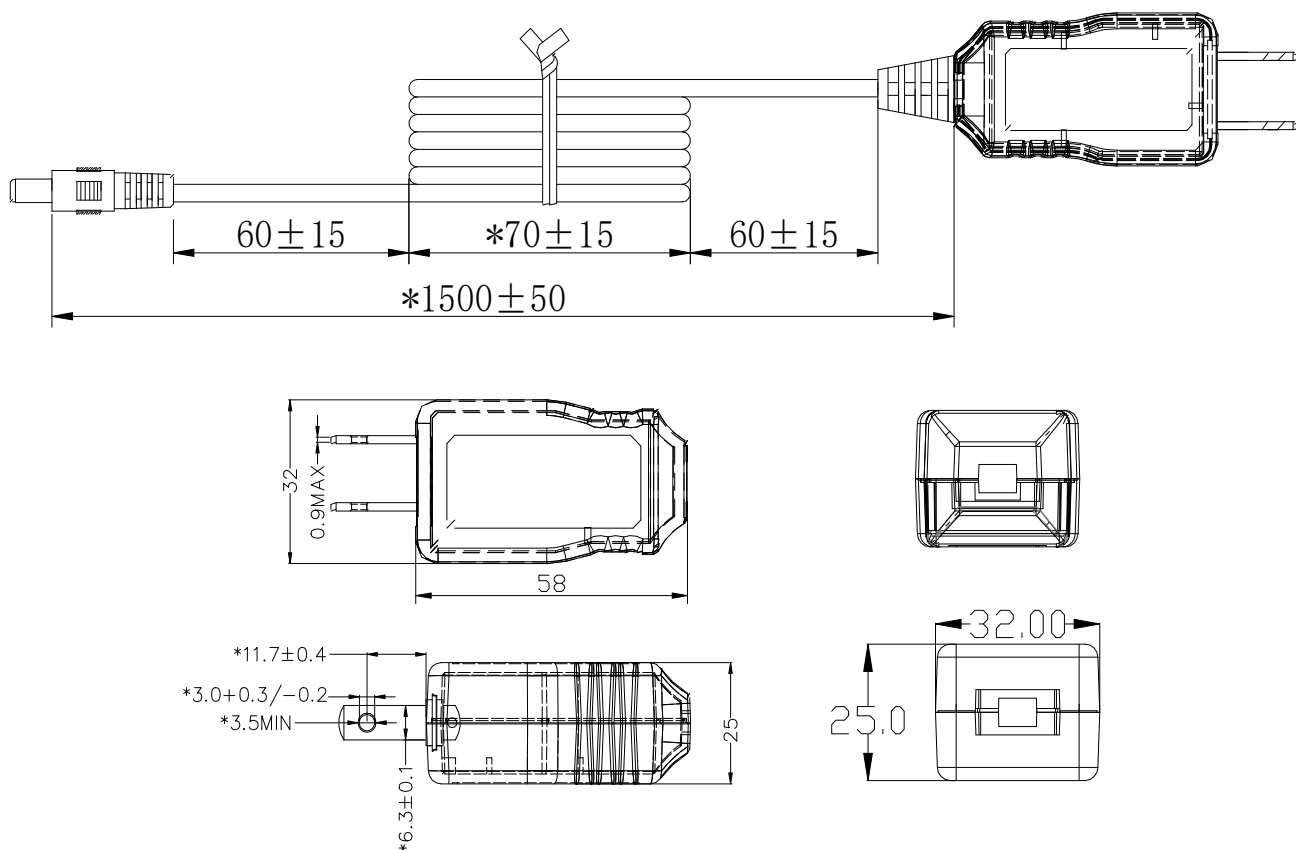
备注:

1. 导线规格: 22AWG 2464 音叉型 外被黑色圆线, 芯线颜色: 红色+黑色, 导线总长1500mm; 材质符合RoHS要求。导线按图示尺寸捆扎、测试, 导线间应开路, 对应线头线尾应短路导通, 极性连接正确;
2. 两头剥线焊锡, 剥线长度3mm+1/-0。剥线要求如图所示, 剥丝线焊锡的直径为1.15mm MAX, 外露导线须全焊。接线方式: 红色芯线接PIN中心, 黑色芯线接外侧, PG头成型, SR-008成型; SR008尺寸为7*4.8mm。
3. SR拉力测试: 吊重1Kg/10分钟, 不可有位移, 吊重5Kg/1分钟, 位移2mmMAX
4. 插拔力测试: 插入力2KgMAX, 拔出力0.3KgMIN; 插拔6000MIN次不允许有电气和机械性能的损坏, 且满足拔出力0.1KgMIN;
5. 摇摆测试: 吊重500g, 以40次/分作90°往返, 每一往返为一次, 至少1000次;
6. PLUG绝缘阻抗测试: 100MΩMIN在500DC/分; PLUG接触阻抗测试: 100mΩMAX;
7. 导线, SR, PLUG非移行性依据厂内一般进行; 禁止使用VDE所禁用的物质。
8. 打*号尺寸, 为入料检查项目;

| | | | | | |
|-----------------|----|-----------|----|---------------|-----|
| 批准 Approval: | ZL | 审核 Check: | ZL | 制表 Execution: | BMD |
|-----------------|----|-----------|----|---------------|-----|

| | | | | | |
|--|-------------|-------------|---------------|------------------|----------------------|
| 产品规格承认书 SPECIFICATION | | | | 文件编号 File No. | UME-EG-SP23021701/A1 |
| 品名 Product | 开关电源 SPS | 型号 Model | AD-AKB050P200 | 日期 Date | 2023-02-17 |

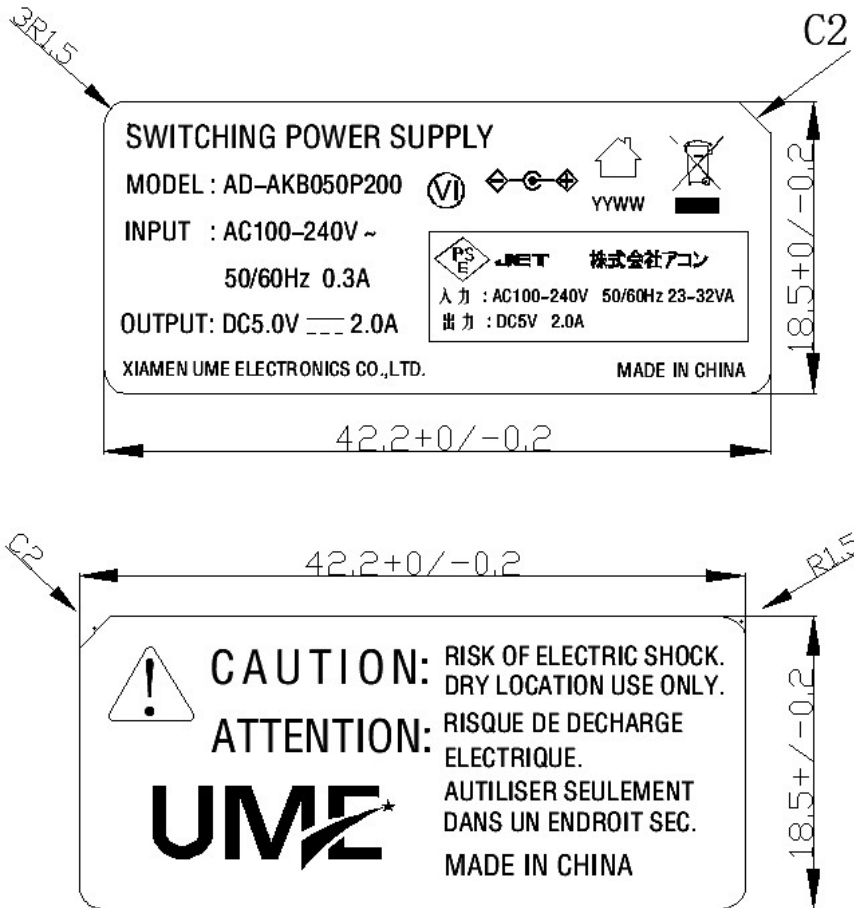
7 外观示意图 Mechanical Drawing (单位 unit: mm 颜色 color: BK)



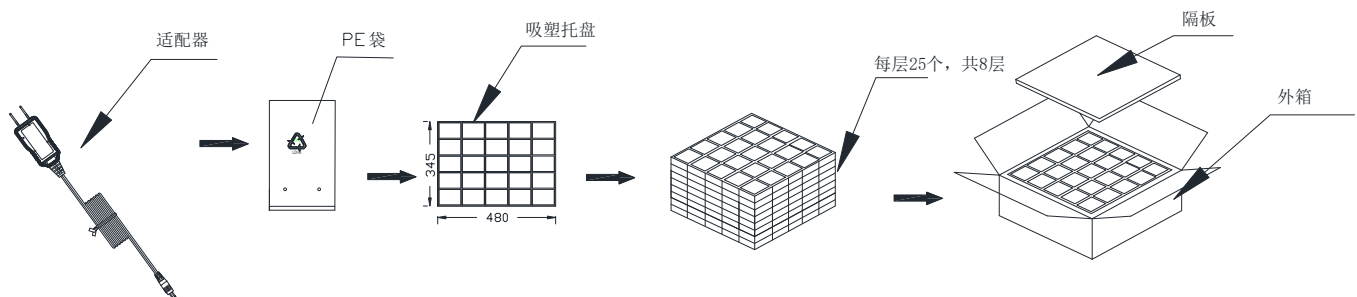
| | | | | | |
|-----------------|----|-----------|----|---------------|-----|
| 批准 Approval: | ZL | 审核 Check: | ZL | 制表 Execution: | BMD |
|-----------------|----|-----------|----|---------------|-----|

| | | | | | |
|--|-------------|-------------|---------------|------------------|----------------------|
| 产品规格承认书 SPECIFICATION | | | | 文件编号 File No. | UME-EG-SP23021701/A1 |
| 品名 Product | 开关电源 SPS | 型号 Model | AD-AKB050P200 | 日期 Date | 2023-02-17 |

8 铭板标识 Label



9 包装方式 Packaging



| | | | | | |
|-----------------|----|-----------|----|---------------|-----|
| 批准 Approval: | ZL | 审核 Check: | ZL | 制表 Execution: | BMD |
|-----------------|----|-----------|----|---------------|-----|

| | | | | | |
|--|-------------|-------------|---------------|------------------|----------------------|
| 产品规格承认书 SPECIFICATION | | | | 文件编号 File No. | UME-EG-SP23021701/A1 |
| 品名 Product | 开关电源 SPS | 型号 Model | AD-AKB050P200 | 日期 Date | 2023-02-17 |

10 BOM list

| NO. | ITEM | DESCRIPTION | SPECIFICATION | QTY | MANUFACTURER |
|-----|-------|--------------|-----------------------------------|-----|----------------------|
| 1 | PCB | PCB | UME-050200R-PCB | 1 | TengShengXing/HG |
| 2 | L2 | CHIP L | 10uH±10% 1206 | 1 | Taiqing/Fenghua |
| 3 | R1,R2 | CHIP R | 1.5MΩ±5% 1206 | 2 | YAGEO/FENG HUA |
| 4 | R3 | CHIP R | 300KΩ±5% 1206 | 1 | YAGEO/FENG HUA |
| 5 | R4 | CHIP R | 100Ω±5% 1206 | 1 | YAGEO/FENG HUA |
| 6 | R5,R6 | CHIP R | 2Ω±1% 1206 | 2 | YAGEO/FENG HUA |
| 7 | R7 | CHIP R | 27KΩ±1% 0603 | 1 | YAGEO/FENG HUA |
| 8 | R8 | CHIP R | 7.5KΩ±1% 0603 | 1 | YAGEO/FENG HUA |
| 9 | R9 | CHIP R | 39KΩ±1% 0603 | 1 | YAGEO/FENG HUA |
| 10 | R10 | CHIP R | 4.7KΩ±5% 0805 | 1 | YAGEO/FENG HUA |
| 11 | R11 | CHIP R | 4.7Ω±5% 0805 | 1 | YAGEO/FENG HUA |
| 12 | R12 | CHIP R | 22Ω±5% 0603 | 1 | YAGEO/FENG HUA |
| 13 | R13 | CHIP R | 1.5KΩ±5% 0805 | 1 | YAGEO/FENG HUA |
| 14 | C1 | CHIP R | 471 500V±10% 1206 X7R | 1 | YAGEO/FENG HUA |
| 15 | C2 | CHIP R | 22PF 50V 0603 COG | 1 | YAGEO/FENG HUA |
| 16 | C3 | CHIP C | 105 16V±10% 0603 X7R | 1 | YAGEO/FENG HUA |
| 19 | D1,D2 | CHIP D | A7 1A/1000V/SOD-123 | 2 | JF/XH |
| 21 | BD1 | Bridge Diode | ABS8 800V 1A | 1 | JF/XH |
| 22 | U1 | IC | OB2573Y SO-8 | 1 | OB |
| 23 | U2 | IC | OB2005VK SO-8 | 1 | OB |
| 24 | L1 | Inductor | 0512-470uH±10% 150mA | 1 | HXH/CHSH/ZY |
| 25 | CY1 | Y cap | Y1 102 400V±20% P=10mm | 1 | STE/HJ |
| 27 | FR1 | Fuse | T2A/250VAC 3.75*10mm | 1 | XC/SUNNY/Little fuse |
| 28 | EC1 | E cap | 10uF 400V±20% 105℃ Φ8*16mm(AX) | 1 | RUBYCON |
| 29 | EC2 | E cap | 10uF 400V±20% 105℃ Φ10*16mm (BXC) | 1 | RUBYCON |
| 30 | EC3 | E cap | 4.7uF 50V±20% 105℃ Φ5*11mm(YXF) | 1 | RUBYCON |
| | | E cap | 4.7uF 50V±20% 105℃ Φ5*11mm(YXJ) | | RUBYCON |

| | | | | | |
|-----------------|----|-----------|----|---------------|-----|
| 批准 Approval: | ZL | 审核 Check: | ZL | 制表 Execution: | BMD |
|-----------------|----|-----------|----|---------------|-----|

| | | | | | |
|--|-------------|-------------|---------------|------------------|----------------------|
| 产品规格承认书 SPECIFICATION | | | | 文件编号 File No. | UME-EG-SP23021701/A1 |
| 品名 Product | 开关电源 SPS | 型号 Model | AD-AKB050P200 | 日期 Date | 2023-02-17 |

| | | | | | |
|----|---------|--------------|------------------------------------|-------|---------------------|
| 31 | EC4 | E cap | 1000uF 6.3V±20% 105℃ Φ6.3*10mm(PZ) | 1 | AISHI |
| 32 | TR1 | TRANSFMOR | TR-050200S3 EE16 | 1 | HXH/ ZY |
| 33 | FR1,L1 | Tube | 5mm 125℃(UL) | 2 | Woer/Sanlian |
| 34 | CASE | CASE | A02-A BK | 1 | JLF/YGE |
| 35 | CASE | CASE | A02-B BK | 1 | JLF/YGE |
| 36 | L,N | Connector | 14.2*2.4*0.3mm CONT-01 | 2 | Xiezhun |
| 37 | BLD | Blade | BLD-011(PSE) BK | 1 | GuanQiao/Yu'o |
| 38 | DC cord | Cable | 1.7*4.0*9.5 22AWG L:1500mm 2464 BK | 1 | DPK/GC/Kaibo |
| 39 | NAP | NAP | NAP-050200F2-PSE | 1 | Yihangxin /JinXin |
| 40 | NAP | NAP | NAP-050101K-PSE-02B | 1 | Yihangxin /JinXin |
| 41 | | PE BAG | 150*100*4.0C | 1 | Xincheng |
| 42 | | CARTON | 490*356*240mm BIN-050080H | 0.005 | XinRuicheng/ FuXing |
| 43 | | partition | 485*350*3mm | 0.005 | XinRuicheng/ FuXing |
| 44 | | plastic tray | 480*345*30mm PVC | 0.04 | DaChengSuJiao |
| 45 | | UL glue | UL UB-100 | 0.8g | U-Bond |
| 46 | | Solder Bar | 0.3Ag 0.7Cu 99Sn | 0.4g | Yun Nan Tin |
| 47 | | Solder wire | 1Cu 99Sn | 0.1g | Yun Nan Tin |

| | | | | | |
|-----------------|----|-----------|----|---------------|-----|
| 批准 Approval: | ZL | 审核 Check: | ZL | 制表 Execution: | BMD |
|-----------------|----|-----------|----|---------------|-----|